

WHAT DO PARTNERSHIPS LOOK LIKE?

Partners come in all shapes and sizes. Like our partnership with the Fairfield County Business Journal. Every week we work with the Journal to produce this page to give you, the reader, a little window into all the great things that are happening in the county. In this column, you also get to hear from one of our members, now more than 260 strong. This partnership has allowed us a platform for getting in front of a business audience and in return, we provide interesting content for the paper—a win/win for all.

Recently, the Cultural Alliance met with Hotel Zero Degrees to talk about how we can partner with it. We have both recently opened our doors in Norwalk. The Cultural Alliance has a new office at Mathews Park, while the hotel has a beautiful new urban-chic hotel on Main Avenue, just off the Merritt Parkway. The hotel is a uniquely designed architectural work of art, but it doesn't stop there. Rather than buying off-the-rack art to complement the design, it has totally gone local. I was so impressed to see that the entire hotel is filled with art by members of the Silvermine Arts Center Artist Guild, which is just up the road in New Canaan.

In our meeting, hotel officials wanted to know how we could partner. What they needed from us was to understand more about what the greater Norwalk area had to offer their guests. They were most interested in being “in the know” so they can help their guests find unique things to do that are local and exciting. We offered lots of ideas and they agreed that FCBuzz.org, our online events calendar, is a great resource that they will promote to their guests through in-room advertising, inserts in the guest book and by posting our logo on their website. They also want to see us succeed, so they offered to host a donor cultivation event for us in the future. This month we'll be

at their grand-opening party, along with the Silvermine Arts Center, cheering each other on to success, because that's what partARTnership looks like.



Ryan Odinak
Executive Director
Cultural Alliance
of Fairfield County

The mission of the Cultural Alliance of Fairfield County is to support cultural organizations, artists and creative businesses by providing promotion, services and advocacy.

For more information, visit CulturalAllianceFC.org or email infoCulturalAllianceFC.org or call 256-2329. For events lists, visit FCBuzz.org.



BLUEGRASS COMES TO BRIDGEPORT



On May 2, WPKN Radio presents a “Bluegrass Benefit Concert” at the Acoustic Café in Bridgeport, featuring top Connecticut-based bluegrass bands Rodeo Fever and Five in the Chamber.

Rodeo Fever plays an eclectic blend of traditional and contemporary Americana music with sprightly rhythms and rich, haunting harmonies. Five in the Chamber is a New Haven-based rollicking bluegrass and old-time string band with a rocking edge. Brought together through a series of music festivals during the summer of 2011, the band

quickly established itself as a staple in the area's emerging bluegrass scene. With tight arrangements, unique harmony vocals and a shared passion for writing original music as well as studying and reinterpreting the bluegrass songbook, Five in the Chamber brings a fresh and exciting twist to the bluegrass repertoire. The band is currently working on its debut album, slotted for release in the spring of 2013.

Net proceeds will benefit WPKN-FM, the listener-sponsored station at 89.5 FM. Celebrating its 50th year of broadcasting, WPKN is community radio with a difference. Its many volunteer programmers are free to control the content of their shows and bring the listeners a breadth and depth of music from blues to jazz to reggae to rock, world, folk and Americana.

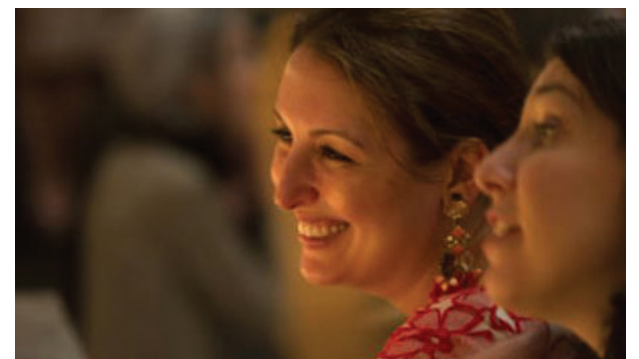
The Acoustic Café is reminiscent of a Greenwich Village club, with small café tables, dim lighting, funky wall art and an intimate vibe. Tickets are \$15 at the door. For more, visit wpkn.org.

FIRST IN FUN

First Fridays at Ridgefield's Aldrich Contemporary Art Museum is the best way to kick off an upbeat spring weekend with an evening of live music, drinks and a new foodie lineup.

The May 3rd event presents an hors d'oeuvres-tasting from the Wilton restaurant gem Schoolhouse at Cannondale and the soulful sounds of Griffin Anthony on vocals, 7 to 9 p.m. Participate in the “Extreme Draw On!” drawing horses in the galleries and sketching the friends you attended with. “Extreme Draw On!” expands on the award-winning “Draw On!” program, founded by The Aldrich in 2006, which annually involves dozens of schools, museums, libraries, businesses and other organizations in Connecticut and around the US. The events and artist-led programs hosted by the museum and its partners celebrate drawing and create a sense of community, while pushing the boundaries of what it means to draw.

This year, “Extreme Draw On!” coincides with “Extreme Drawing,” a semester-long series of exhibitions presenting an array of approaches taken by contemporary artists to push the boundaries of drawing, one of the most direct and



Folks enjoy First Fridays at Ridgefield's Aldrich Contemporary Art Museum.

universal means of visual expression. There will be a leisurely docent-led tour at 7:30 p.m. of the “Extreme Drawing” exhibitions, featuring 15 artists. The Aldrich is dedicated to fostering innovative artists whose ideas and interpretations of the world around us serve as a platform to encourage creative thinking. The Aldrich is one of the few independent, noncollecting contemporary art museums in the United States and the only museum in Connecticut devoted to contemporary art. The museum is at 258 Main St., Ridgefield. All exhibitions and programs are handicapped-accessible and there is free on-site parking. For more, visit aldrichart.org.

Visit FCBuzz.org for more information on events and how to get listed.



Presented by:
Cultural Alliance of
Fairfield County